



# Product Pack for Fosroc® Conbextra PM Thixotropic Mortar

# INDEX

---

1. Product introduction

---

2. Product Data Sheets  
SDS

---

3. Method Statement

---

4. Case Study

---

---





# PRODUCT INTRODUCTION

Conbextra PM

# Product Information

---

**Product Name.****Conbextra PM.**

---

---

**Description.**

Single component thixotropic cementitious pumping and pointing mortar

---

---

**Photo.**

---

**Colour.****Grey Powder**

---

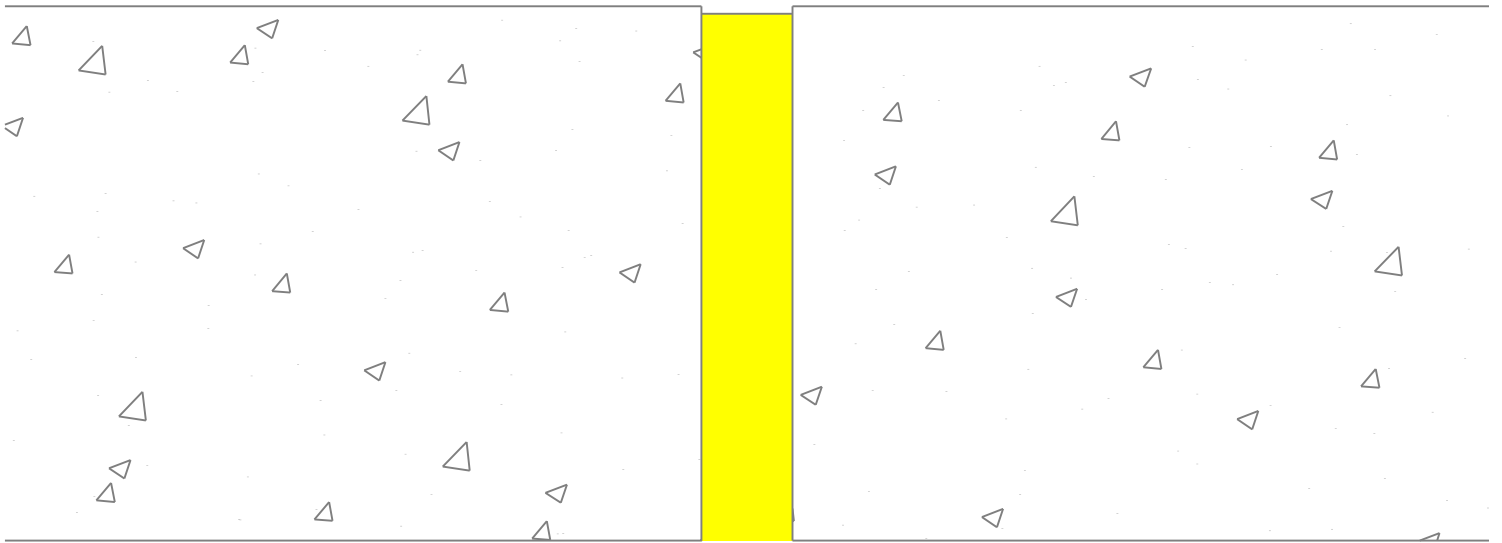
---

**Packaging:****20 kg/bag**

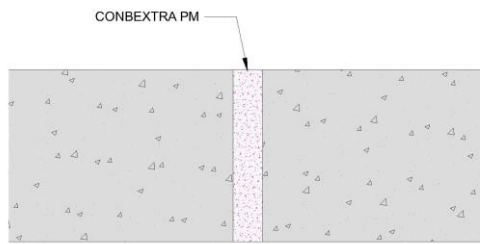
---



# System & Application Area



Conbextra PM

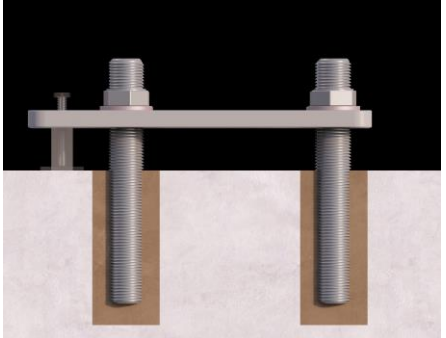


**Structural grouting of  
gaps in precast units and  
high strength pointing.**



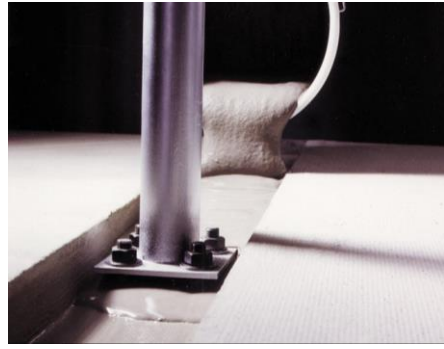
# Product Advantages

Conbextra PM is a single component thixotropic cementitious pumping and pointing mortar.



Fast installation rate

Pump application



Pre-bled to overcome site-batching variations

Easy to use no priming required





# PRODUCT DATA SHEETS

## Single component thixotropic cementitious pumping and pointing mortar

### Uses

For structural grouting of gaps in precast units and high strength pointing.

### Advantages

- Fast installation rate
- Pump application
- Pre-blended to overcome site-batching variations
- Easy to use no priming required
- Rapid strength gain
- Shrinkage compensated

### Description

Conbextra PM is a single pack cement based thixotropic pumpable mortar, blended from cements, fine aggregates and admixtures with a maximum grain size less than 1 mm. It requires only the addition of clean water to produce an easily pumped mortar.

### Application Instructions

#### Surface preparation

To obtain maximum adhesion remove by grit blast or grinding, loose friable substrates to provide a clean, open faced cavity. Ensure substrate is free from oil, paint and other contaminants that would prevent good adhesion. Pre-soak substrate with water.

#### Mixing

Care should be taken to ensure Conbextra PM is thoroughly mixed. When pump applying a forced action mixer sited over or adjacent to the pump chamber is recommended. For hand applied applications a forced action mixer is required. For a single bag the product can be mixed in a drum using a Renderoc Mixing Paddle and a slow speed (400 – 500 rpm) heavy duty drill. Part bags may be mixed but careful measurement of the mixing water is essential.

In all applications the powder is always to be added to the water. 3.1 - 3.3 litres of clean drinking water should be added to the mixing vessel for each bag of powder. The product should be mixed for a minimum of 3 minutes and a maximum of 5 minutes after adding all powder.

To obtain the correct handling characteristics and product performance the mixing instructions should be followed.

#### Application

Pump application by use of rotor stator or worm pump capable of mixing this particle size, using 25 mm ID hosing. Hand application by pointing gun or trowel is also possible.

### Finishing

Material should be tooled or cut back whilst wet to the required profile by the use of hand trowels or a standard pointing tool. Ensure all material is removed from the substrate face whilst still wet.

### Cleaning

Conbextra PM should be removed from tools, equipment, pump and mixers with clean water immediately after use. Cured material can only be removed mechanically.

### Limitations

Conbextra PM should not be used when the temperature is below 3°C and falling. The product should not be exposed to moving water during application. Exposure to heavy rainfall prior to final set may result in surface scour.

### Properties and product details

<b>Compressive Strength @ 20° (EN 12190 : 1999) at a water powder ratio 0.16</b>	1 day	36 MPa
	7 days	54 MPa
	28 days	60 MPa
<b>Water content per bag</b>	3.1 – 3.3 litres	
<b>Minimum application thickness</b>	10 mm	
<b>Fresh wet density</b>	2200	
<b>Maximum grain size</b>	0.75 mm	
<b>Fire rating (EN 1504-3 cl. 5.5)</b>	Class A1	
<b>Supply</b>	20 kg bags	
<b>Yield</b>	Approx. 10.5 litres	
<b>Shelf life</b>	12 months	

**Clarification of property details:** The typical properties given above are obtained from laboratory testing. Results derived from field applied samples may vary.

#### Storage conditions

Store in internally in dry conditions in original unopened bags. If stored at high temperature and/or humidity the shelf life may be reduced to 4 months. Note bags are not waterproof.

#### Precautions

#### Health and safety

For further information refer to the appropriate Safety Data Sheet also available at [www.fosroc.com](http://www.fosroc.com).

#### Fire

Conbextra PM is non-flammable

# Fosroc® Conbextra PM

---



#### Important note

Fosroc products are guaranteed against defective materials and manufacture and are sold subject to its standard Conditions for the Supply of Goods and Services, copies of which may be obtained on request. Whilst Fosroc endeavours to ensure that any advice, recommendation, specification of information it may give is accurate and correct, it cannot, because it has no direct or continuous control over where or how its products are applied, accept any liability either directly or indirectly arising from the use of its products, whether or not in accordance with any advice, specification, recommendation of information given by basis. All Fosroc datasheets are updated on a regular basis. It is the user's responsibility to obtain the latest version.

## Fosroc Limited

Drayton Manor Business Park-  
Coleshill Road, Tamworth,  
Staffordshire B78 3XN. UK

[www.fosroc.com](http://www.fosroc.com)

**telephone:**  
+44 0 (1827) 262222

**fax:**  
+44 0 (1827) 262444

**email:**  
[enquiryuk@fosroc.com](mailto:enquiryuk@fosroc.com)



Certificate number FM 610



# SDS



## SAFETY DATA SHEET CONBEXTRA PM

### SECTION 1: Identification of the substance/mixture and of the company/undertaking

#### 1.1. Product identifier

Product name	CONBEXTRA PM
Product number	2223000 UK9
UFI	UFI: SH10-F03N-C00U-Y8FJ

#### 2. Relevant identified uses of the substance or mixture and uses advised against

Identified uses	Cementitious Grouts
-----------------	---------------------

#### 3. Details of the supplier of the safety data sheet

Supplier	Fosroc International Limited Drayton Manor Business Park Coleshill Road Tamworth Staffordshire B78 3XN England Tel: +44 (0) 1827 262222 Fax: +44 (0) 1827 262444 <a href="mailto:enquiryuk@fosroc.com">enquiryuk@fosroc.com</a>
----------	--

#### 1.4. Emergency telephone number

Emergency telephone	+44 (0) 1827 265 279 (Monday-Sunday 24 hours a day)
---------------------	---

### SECTION 2: Hazards identification

#### 2.1. Classification of the substance or mixture

##### Classification (EC 1272/2008)

Physical hazards	Not Classified
Health hazards	Skin Irrit. 2 - H315 Eye Dam. 1 - H318 Skin Sens. 1 - H317 STOT SE 3 - H335
Environmental hazards	Not Classified

**Human health** Dust or splashes from the mixture may cause permanent eye damage. Dust may irritate the respiratory system. Symptoms following overexposure may include the following: Coughing. Dust has an irritating effect on moist skin. Prolonged contact with moist or wet product may cause burns. Frequent inhalation of dust over a long period of time increases the risk of developing lung diseases.

**Environmental** The product will harden into a solid mass in contact with water and moisture. The resultant material is not biodegradable.

#### 2.2. Label elements

## CONBEXTRA PM

### Hazard pictograms



### Signal word

Danger

### Hazard statements

H315 Causes skin irritation.  
 H317 May cause an allergic skin reaction.  
 H318 Causes serious eye damage.  
 H335 May cause respiratory irritation.

### Precautionary statements

P271 Use only outdoors or in a well-ventilated area.  
 P280 Wear protective gloves/ protective clothing/ eye protection/ face protection.  
 P305+P351+P338 IF IN EYES: Rinse cautiously with water for several minutes. Remove contact lenses, if present and easy to do. Continue rinsing.  
 P501 Dispose of contents/ container in accordance with national regulations.

### Contains

CEMENT POWDER

### Supplementary precautionary statements

P261 Avoid breathing dust.  
 P264 Wash contaminated skin thoroughly after handling.  
 P272 Contaminated work clothing should not be allowed out of the workplace.  
 P302+P352 IF ON SKIN: Wash with plenty of water.  
 P304+P340 IF INHALED: Remove person to fresh air and keep comfortable for breathing.  
 P310 Immediately call a POISON CENTER/ doctor.  
 P312 Call a POISON CENTRE/doctor if you feel unwell.  
 P321 Specific treatment (see medical advice on this label).  
 P332+P313 If skin irritation occurs: Get medical advice/ attention.  
 P333+P313 If skin irritation or rash occurs: Get medical advice/ attention.  
 P362+P364 Take off contaminated clothing and wash it before reuse.  
 P403+P233 Store in a well-ventilated place. Keep container tightly closed.  
 P405 Store locked up.

### 2.3. Other hazards

This substance is not classified as PBT or vPvB according to current EU criteria.

## SECTION 3: Composition/information on ingredients

### 3.2. Mixtures

<b>SILICA SAND</b>	<b>30-60%</b>
CAS number: 14808-60-7	EC number: 238-878-4
No. REACH: Exempt of registration	
<b>Classification</b>	
Not Classified	

## CONBEXTRA PM

<b>ORDINARY PORTLAND CEMENT</b>	<b>30-60%</b>
CAS number: 65997-15-1	EC number: 266-043-4
<b>Classification</b>	
Skin Irrit. 2 - H315	
Eye Dam. 1 - H318	
Skin Sens. 1 - H317	
STOT SE 3 - H335	
<b>CALCIUM ALUMINATE SULPHATE</b>	<b>1-5%</b>
CAS number: 12005-25-3	EC number: 818-462-4
<b>Classification</b>	
Skin Irrit. 2 - H315	
Eye Dam. 1 - H318	
STOT SE 3 - H335	
<b>GROUND GRANULATED BLASTFURNACE SLAG (GGBS)</b>	<b>1-5%</b>
CAS number: 65996-69-2	EC number: 266-002-0
	REACH registration number: 01-2119487456-25-XXXX
<b>Classification</b>	
Not Classified	
<b>FORMALDEHYDE</b>	<b>&lt;1%</b>
CAS number: 50-00-0	EC number: 200-001-8
	REACH registration number: 01-2119488953-20
<b>Classification</b>	
Acute Tox. 3 - H301	
Acute Tox. 3 - H311	
Acute Tox. 3 - H331	
Skin Corr. 1B - H314	
Eye Dam. 1 - H318	
Skin Sens. 1 - H317	
Muta. 2 - H341	
Carc. 1B - H350	
STOT SE 3 - H335	

The Full Text for all R-Phrases and Hazard Statements are Displayed in Section 16.

### SECTION 4: First aid measures

#### 4.1. Description of first aid measures

##### General information

No personal protective equipment is needed for first aid responders. First aid workers should avoid contact with wet cement or wet cement containing preparations.

##### Inhalation

Move affected person to fresh air at once. Dust in throat and nasal passages should clear spontaneously. Get medical attention if irritation persists or later develops, or if discomfort, coughing or other symptoms persist.

## CONBEXTRA PM

<b>Ingestion</b>	Do not induce vomiting. Rinse mouth thoroughly with water. Give plenty of water to drink. Give milk instead of water if readily available. Never give anything by mouth to an unconscious person. Get medical attention immediately.
<b>Skin contact</b>	After contact with skin, take off immediately all contaminated clothing, and wash immediately with plenty of water. Get medical attention promptly if symptoms occur after washing.
<b>Eye contact</b>	Rinse immediately with plenty of water. Remove contact lenses, if present and easy to do. Continue rinsing. Continue to rinse for at least 15 minutes. Get medical attention. Show this Safety Data Sheet to the medical personnel.

### 4.2. Most important symptoms and effects, both acute and delayed

<b>General information</b>	The severity of the symptoms described will vary dependent on the concentration and the length of exposure.
<b>Inhalation</b>	Frequent inhalation of dust over a long period of time increases the risk of developing lung diseases.
<b>Ingestion</b>	Ingestion of large doses may result in irritation to the gastrointestinal tract.
<b>Skin contact</b>	May have an irritating effect on moist skin after prolonged contact, or may cause dermatitis after repeated contact. Prolonged skin contact with wet preparation may cause serious burns without pain being felt, including through clothing.
<b>Eye contact</b>	Eye contact may cause serious and potentially irreversible injuries.

### 4.3. Indication of any immediate medical attention and special treatment needed

<b>Notes for the doctor</b>	Treat symptomatically.
-----------------------------	------------------------

## SECTION 5: Firefighting measures

### 1. Extinguishing media

<b>Suitable extinguishing media</b>	The product is not flammable. Use fire-extinguishing media suitable for the surrounding fire.
-------------------------------------	---

### 2. Special hazards arising from the substance or mixture

<b>Specific hazards</b>	Water used for fire extinguishing, which has been in contact with the product, may be corrosive. No unusual fire or explosion hazards noted.
<b>Hazardous combustion products</b>	No known hazardous decomposition products.

### 5.3. Advice for firefighters

<b>Protective actions during firefighting</b>	No specific firefighting precautions known.
<b>Special protective equipment for firefighters</b>	Use protective equipment appropriate for surrounding materials.

## SECTION 6: Accidental release measures

### 6.1. Personal precautions, protective equipment and emergency procedures

<b>Personal precautions</b>	Use work methods which minimize dust production. Avoid contact with eyes and prolonged skin contact. Wear protective clothing as described in Section 8 of this safety data sheet. Avoid inhalation of dust.
-----------------------------	--

### 6.2. Environmental precautions

<b>Environmental precautions</b>	Collect and dispose of spillage as indicated in Section 13. Do not discharge into drains or watercourses or onto the ground.
----------------------------------	--

## CONBEXTRA PM

### 6.3. Methods and material for containment and cleaning up

**Methods for cleaning up** Collect powder using special dust vacuum cleaner with particle filter or carefully sweep into suitable waste disposal containers and seal securely. Dry material: Collect powder using special dust vacuum cleaner with particle filter. Alternatively, damp powder with fine spray (to avoid dust formation) and remove slurry. Place into container and allow to solidify before disposal as described in section 13. Wet material: Clean up wet material and place in a container. Allow to dry and solidify before disposal as described in section 13.

### 6.4. Reference to other sections

**Reference to other sections** For personal protection, see Section 8. For waste disposal, see section 13.

## SECTION 7: Handling and storage

### 7.1. Precautions for safe handling

**Usage precautions** Avoid contact with skin and eyes. Avoid generation and spreading of dust. Avoid inhalation of dust. Mechanical ventilation or local exhaust ventilation may be required. Change contaminated clothing. Do not eat, drink or smoke when using the product.

### 7.2. Conditions for safe storage, including any incompatibilities

**Storage precautions** Store in tightly-closed, original container in a dry and cool place. Unsuitable container materials: Aluminium. The product contains less than 2 mg chromate/kg dry cement, and this limit will not be exceeded for 6 months from the packing date stated on the packaging. Seal opened containers and use up as soon as possible. To be stored out of reach of children in its original packaging in a dry place.

### 7.3. Specific end use(s)

**Specific end use(s)** The identified uses for this product are detailed in Section 1.2.

## SECTION 8: Exposure controls/Personal protection

### 8.1. Control parameters

#### Occupational exposure limits

#### SILICA SAND

Long-term exposure limit (8-hour TWA): WEL 0,05 mg/m<sup>3</sup> respirable dust

#### ORDINARY PORTLAND CEMENT

Long-term exposure limit (8-hour TWA): WEL 10 mg/m<sup>3</sup> inhalable dust

Long-term exposure limit (8-hour TWA): WEL 4 mg/m<sup>3</sup> respirable dust

#### CALCIUM ALUMINATE SULPHATE

Long-term exposure limit (8-hour TWA): ACGIH/TLV:0.1 mg/m<sup>3</sup> res

TLV - Threshold Limit Value 10 mg/m<sup>3</sup>

#### FORMALDEHYDE

Long-term exposure limit (8-hour TWA): WEL 2 ppm 2.5 mg/m<sup>3</sup>

Short-term exposure limit (15-minute): WEL 2 ppm 2.5 mg/m<sup>3</sup>

WEL = Workplace Exposure Limit.

#### ORDINARY PORTLAND CEMENT (CAS: 65997-15-1)

**DNEL**

Workers - Inhalation; Short term : 3 mg/m<sup>3</sup>

#### FORMALDEHYDE (CAS: 50-00-0)

## CONBEXTRA PM

<b>DNEL</b>	Workers - Inhalation; Long term systemic effects: 9 mg/m <sup>3</sup> Workers - Inhalation; Long term local effects: 0,5 mg/m <sup>3</sup> Workers - Inhalation; Short term local effects: 1 mg/m <sup>3</sup> Workers - Dermal; Long term systemic effects: 240 mg/kg/day Workers - Dermal; Long term local effects: 37 µg/cm <sup>2</sup>
<b>PNEC</b>	- Fresh water, marine water; 0.47 mg/l - STP; 0.19 mg/l Water, Intermittent release; 4,7 mg/l Sediment (Freshwater), Sediment (Marinewater); 2,44 mg/kg Soil; 0,21 mg/kg

### 8.2. Exposure controls

#### Protective equipment



#### Appropriate engineering controls

Atmospheric levels of dust must be maintained within the Occupational Exposure Limit. Where mechanical methods are inadequate or impractical, appropriate personal protective equipment must be used.

#### Personal protection

Personal protection equipment should be chosen according to the CEN standards and in discussion with the supplier of the personal protective equipment. This product may present a chromate (VI) allergy risk. It contains a chromate reducing agent, but users should wear appropriate personal protective equipment.

#### Eye/face protection

The following protection should be worn: Chemical splash goggles. (conform EN 166)

#### Hand protection

Use impervious, abrasion and alkali resistant gloves. Barrier cream applied before work may make it easier to clean the skin after exposure, but does not prevent absorption through the skin.

#### Other skin and body protection

Use barrier creams to minimise skin contact. Wear appropriate clothing to prevent repeated or prolonged skin contact.

#### Hygiene measures

This product contains silica sands.  
The grain size distribution of silica sand present means that it is not classified as hazardous. However, any respirable crystalline dust generated by secondary processing may cause health effects.  
Prolonged and /or massive inhalation of respirable crystalline silica dust may cause lung fibrosis, commonly referred to as silicosis. Principal symptoms of silicosis are cough and breathlessness.  
Occupational exposure to respirable crystalline silica dust should be monitored and controlled.

#### Respiratory protection

Wear a respirator fitted with the following cartridge: Particulate filter, type P2.

### SECTION 9: Physical and chemical properties

#### 9.1. Information on basic physical and chemical properties

<b>Appearance</b>	Dusty powder.
<b>Colour</b>	Grey.
<b>Odour</b>	Odourless.
<b>Odour threshold</b>	Not relevant.
<b>pH</b>	pH (concentrated solution): >12

## CONBEXTRA PM

<b>Melting point</b>	>1250°C
<b>Initial boiling point and range</b>	Not applicable.
<b>Flash point</b>	Not applicable.
<b>Evaporation rate</b>	Not applicable.
<b>Evaporation factor</b>	Not applicable.
<b>Flammability (solid, gas)</b>	Not applicable.
<b>Upper/lower flammability or explosive limits</b>	The product is not flammable.
<b>Other flammability</b>	Not applicable.
<b>Vapour pressure</b>	Not applicable.
<b>Vapour density</b>	Not applicable.
<b>Solubility(ies)</b>	Slightly soluble in water. Hardens in contact with water.
<b>Auto-ignition temperature</b>	Not determined.
<b>Decomposition Temperature</b>	Not determined.
<b>Viscosity</b>	Not applicable.
<b>Explosive properties</b>	Not considered to be explosive.
<b>Explosive under the influence of a flame</b>	Not considered to be explosive.
<b>Oxidising properties</b>	The mixture itself has not been tested but none of the ingredient substances meet the criteria for classification as oxidising.
<b>Comments</b>	Information given is applicable to the product as supplied.

### 9.2. Other information

**Other information** No data available.

## SECTION 10: Stability and reactivity

### 10.1. Reactivity

**Reactivity** When mixed with water, hardens to form a stable mass that is not reactive in normal conditions.

### 10.2. Chemical stability

**Stability** Stable under the prescribed storage conditions. When stored under humid conditions, the chromate neutralization will decrease. This product contains a chromate reducing agent to reduce the risk of allergic dermatitis caused by chromium (VI). This product has a shelf life. If not stored in accordance with packaging instructions (sealed and dry), there is an increased risk of the presence of hexavalent chromate leading to an increased risk of an allergic reaction.

### 10.3. Possibility of hazardous reactions

**Possibility of hazardous reactions** None known. Will not polymerise.

### 10.4. Conditions to avoid

**Conditions to avoid** Water, moisture.

## CONBEXTRA PM

### 10.5. Incompatible materials

**Materials to avoid** Acids. Chemically-active metals.

### 10.6. Hazardous decomposition products

**Hazardous decomposition products** No known hazardous decomposition products.

## SECTION 11: Toxicological information

### 11.1. Information on toxicological effects

#### Skin sensitisation

**Skin sensitisation** Some individuals may exhibit eczema upon exposure to wet cement caused either by the high pH which induces irritant contact dermatitis, or by an immunological reaction to soluble Cr (VI) which elicits allergic contact dermatitis. The cement contains a soluble Cr (VI) reducing agent and as long as the mentioned period of effectiveness is not exceeded, a sensitising effect is not expected.

**Inhalation** Irritating to respiratory system. Inflammation of the nasal mucous membrane by exposure to cement dust.

**Ingestion** May cause irritation of mouth, throat and digestive tract.

**Skin contact** This product is strongly irritating. Prolonged contact may cause burns. May cause sensitisation by skin contact.

**Eye contact** Irritating and may injure eye tissue if not removed promptly.

**Acute and chronic health hazards** Repeated and/or prolonged contact may lead to dermatitis.

**Route of exposure** Dermal

#### Toxicological information on ingredients.

### ORDINARY PORTLAND CEMENT

#### Acute toxicity - dermal

**Acute toxicity dermal (LD<sub>50</sub>)** 2,000.0 mg/kg

**Species** Rabbit

## SECTION 12: Ecological information

**Ecotoxicity** The product is not expected to be hazardous to the environment.

### 12.1. Toxicity

#### Acute aquatic toxicity

**Acute toxicity - fish** Not determined.  
The product is not expected to be hazardous to the environment. The addition of cements to water will, however, cause the pH to rise and may therefore be toxic to aquatic life in some circumstances.

#### Ecological information on ingredients.

### ORDINARY PORTLAND CEMENT

#### Acute aquatic toxicity

**Acute toxicity - fish** Not determined.

## CONBEXTRA PM

### 12.2. Persistence and degradability

**Persistence and degradability** The product is not biodegradable.

### 12.3. Bioaccumulative potential

**Bioaccumulative potential** The product is not bioaccumulating.

### 12.4. Mobility in soil

**Mobility** The product hardens to a solid, immobile substance. The product is not volatile but may be spread by dust-raising handling.

### 12.5. Results of PBT and vPvB assessment

**Results of PBT and vPvB assessment** This product does not contain any substances classified as PBT or vPvB.

### 12.6. Other adverse effects

**Other adverse effects** None known.

## SECTION 13: Disposal considerations

### 13.1. Waste treatment methods

**General information** Do not empty into drains, sewers or water courses. Cement that has exceeded its shelf life: when demonstrated that it contains more than 0.0002% Cr (VI), the product shall not be used other than in controlled closed and totally automated processes. It may be recycled and/or treated again with a reducing agent.

**Disposal methods** Dispose of waste to licensed waste disposal site in accordance with the requirements of the local Waste Disposal Authority. Note that fully cured material is not considered as hazardous waste.

## SECTION 14: Transport information

**General** The product is not covered by international regulations on the transport of dangerous goods (IMDG, IATA, ADR/RID).

1. **UN number**

Not applicable.

2. **UN proper shipping name**

Not applicable.

3. **Transport hazard class(es)**

No transport warning sign required.

4. **Packing group**

Not applicable.

5. **Environmental hazards**

**Environmentally hazardous substance/marine pollutant**

No.

6. **Special precautions for user**

Not applicable.

7. **Transport in bulk according to Annex II of MARPOL and the IBC Code**

## CONBEXTRA PM

**Transport in bulk according to Annex II of MARPOL 73/78 and the IBC Code** Not applicable.

### SECTION 15: Regulatory information

#### 15.1. Safety, health and environmental regulations/legislation specific for the substance or mixture

<b>National regulations</b>	The Control of Substances Hazardous to Health Regulations 2002 (SI 2002 No. 2677) (as amended).
<b>EU legislation</b>	Regulation (EC) No 1272/2008 of the European Parliament and of the Council of 16 December 2008 on classification, labelling and packaging of substances and mixtures (as amended). Regulation (EC) No 1907/2006 of the European Parliament and of the Council of 18 December 2006 concerning the Registration, Evaluation, Authorisation and Restriction of Chemicals (REACH) (as amended). Commission Regulation (EU) No 2015/830 of 28 May 2015.

#### 15.2. Chemical safety assessment

No chemical safety assessment has been carried out.

### SECTION 16: Other information

<b>Abbreviations and acronyms used in the safety data sheet</b>	ATE: Acute Toxicity Estimate. CAS: Chemical Abstracts Service. DMEL: Derived Minimal Effect Level. DNEL: Derived No Effect Level. LC <sub>50</sub> : Lethal Concentration to 50 % of a test population. LD <sub>50</sub> : Lethal Dose to 50% of a test population (Median Lethal Dose). PBT: Persistent, Bioaccumulative and Toxic substance. PNEC: Predicted No Effect Concentration. SVHC: Substances of Very High Concern.
---	--

<b>General information</b>	For professional users only. Only trained personnel should use this material.
<b>Revision comments</b>	NOTE: Lines within the margin indicate significant changes from the previous revision.
<b>Revision date</b>	08/03/2021
<b>Revision</b>	9c
<b>Supersedes date</b>	22/05/2017
<b>SDS number</b>	25270
<b>Hazard statements in full</b>	H301 Toxic if swallowed. H311 Toxic in contact with skin. H314 Causes severe skin burns and eye damage. H315 Causes skin irritation. H317 May cause an allergic skin reaction. H318 Causes serious eye damage. H331 Toxic if inhaled. H335 May cause respiratory irritation. H341 Suspected of causing genetic defects. H350 May cause cancer.

The information on this data sheet represents our current data and is reliable provided that the product is used under the prescribed conditions and in accordance with the application specified on the packaging and/or in the technical guidance literature. Any other use of the product which involves using the product in combination with any other product or any other process is the responsibility of the user.



# METHOD STATEMENT

## **SINGLE COMPONENT THIXOTROPIC CEMENTITIOUS PUMPING** **AND POINTING MORTAR - Conbextra PM**

### **1. Substrate Preparation**

- a. To obtain maximum adhesion remove by grit blast or grinding, loose friable substrates to provide a clean, open faced cavity. Ensure substrate is free from oil, paint and other contaminants that would prevent good adhesion. Pre-soak substrate with water.

### **2. Mixing**

- a. Care should be taken to ensure Conbextra PM is thoroughly mixed. When pump applying a forced action mixer sited over or adjacent to the pump chamber is recommended. For hand applied applications a forced action mixer is required. For a single bag the product can be mixed in a drum using a Renderoc Mixing Paddle and a slow speed (400 – 500 rpm) heavy duty drill. Part bags may be mixed but careful measurement of the mixing water is essential.
- b. In all applications the powder is always to be added to the water. 3.1 - 3.3 litres of clean drinking water should be added to the mixing vessel for each bag of powder. The product should be mixed for a minimum of 3 minutes and a maximum of 5 minutes after adding all powder.
- c. To obtain the correct handling characteristics and product performance the mixing instructions should be followed.

### **3. Application**

- a. Pump application by use of rotor stator or worm pump capable of mixing this particle size, using 25 mm ID hosing. Hand application by pointing gun or trowel is also possible.

### **4. Finishing**

- a. Material should be tooled or cut back whilst wet to the required profile by the use of hand trowels or a standard pointing tool. Ensure all material is removed from the substrate face whilst still wet.



## METHOD STATEMENT

### **5. Cleaning**

- a. Conbextra PM should be removed from tools, equipment, pump and mixers with clean water immediately after use. Cured material can only be removed mechanically.



# PROJECT REFERENCES



## Student Housing Manchester

**CUSTOMER**  
RLH Construction

**SECTOR**  
Buildings Residential

**DATE**  
2019 - 2020

### PRODUCTS

- Conbextra GP
- Conbextra PM
- Conbextra BM

### THE PROJECT

A 17 storey block of apartments was to be constructed in the St Peters Square area of Manchester. The site, located close to the city centre and University area, had very limited access due to a large retail park on one side and a canal on the other. This meant that standard construction methods such as pouring a concrete frame would be impossible, so other methods needed to be looked at. A fast, reliable method of construction was required.

### THE SOLUTION

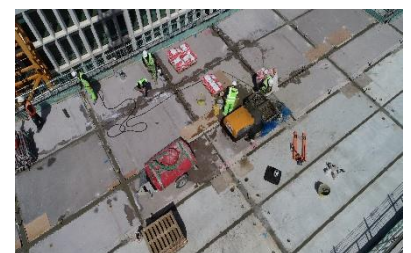
The main contractor employed RLH Construction to use Architectural Precast Sandwich Panels. This method of construction involved the precast panels being cast offsite then brought to site on lorries and craned into place. The external panels were already cast architecturally to the required external design. The internal floors were then placed and grouted, and finally the internal walls were erected. Once this process had been completed, the next floor was placed following the same sequence. As each floor was constructed, pre-fitted bathroom pods were lowered into the rooms before the next floor was placed, removing the need for bathroom fit out. The floors were grouted using Fosroc Conbextra GP, and the precast external and internal walls were placed onto Fosroc Conbextra BM (Bedding Mortar). Once in place, the vertical joints in the walls were grouted using Fosroc Conbextra PM, a thixotropic grout that can be pumped directly into a vertical joint without it falling out, ready for it to be trowelled flush with the walls.

### THE BENEFITS

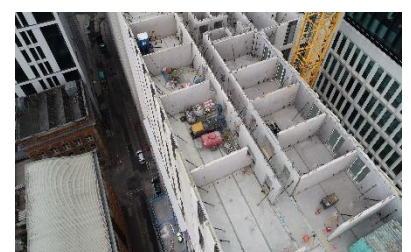
RLH Construction were able to achieve a rapid turnaround on each floor, progressing onto the next floor much more quickly than with conventional construction. This was due in part to RLH being highly skilled in placing Fosroc grouting products and to the fact that Conbextra grouts will achieve strengths in excess of 60N much faster than normal concrete. With the precast units arriving to site already formed, there was far less remediation to contend with and it was just a case of fixing and grouting them in place, with the Fosroc grouts providing a very strong, solid bond.



External panels being lifted into place



Floor panels grouted with Conbextra GP



Vertical panels grouted with Conbextra BM and PM

# CASE STUDIES



**Thackeray Building, London**

The Thackeray Building is a 5-storey block of residential flats in Herbrand Street dating back to the early 1900's, constructed of concrete and brick. Over the years the concrete elements have suffered from water ingress which has resulted in spalling and also corrosion of steel 'H' sections above the windows. Fosroc were able to supply a total solution package.



**ICAIR, Sheffield**

During construction the concrete to form the tanks had been poured to the wrong measurements and in order to correct the situation a product was required that could withstand the pressure and load from the stored water and gain a compressive strength similar to the parent concrete. Repairs were successfully carried out using Renderoc LA60.



**A404M, Cannon Lane**

Works included reconstruction of the joint edges and repairing defective concrete in the bridge deck with a clear objective to get the works completed quickly and reduce the closure of the very busy major route. Patchroc 250 thick section repair mortar which exceeds the requirements of BS EN 1504, and Highways England was successfully installed minimising disruption and allowing a rapid return to service.



**Central Station, Glasgow**

When platform repairs were required at Central Station, Glasgow Fosroc's Paveroc pavement reinstatement mortar was selected due to its rapid strength gain which means it can accept pedestrian traffic at 12 hours. In addition to providing a rapid return to service of the platforms Paveroc's high strength, abrasion and weather resistance ensures that it will provide a durable repair.



**Victoria Hospital, Blackpool**

The Maternity Wing at Blackpool Victoria Hospital was constructed in the 1960's and over the years had been subjected to many environmental stresses, particularly due to its marine location. Fosroc provided a specification to repair the degraded concrete and bring a new lease of life to the structure using the Renderoc Repair System.



**Oldbury Viaduct, M5 Midlands**

Fosroc delivered a sustainable motorway repair solution using Renderoc LA60 meeting Highways England's quality standards. Fosroc successfully introduced innovations in product design, and in bulk supply, maintaining regular supply to site through a fully integrated supply chain and production process. This approach helped reduce costs, save time and enabled concrete repairs to be carried out effectively in a challenging environment.

Fosroc offers a full range of construction chemical solutions, helping to protect structures throughout the world. Please refer to our brochures, which include:



[www.fosroc.com](http://www.fosroc.com)

**Important Note**

Fosroc products are guaranteed against defective materials and manufacture and are sold subject to its standard terms and conditions of sale, copies of which may be obtained on request. Whilst Fosroc endeavours to ensure that any advice, recommendation, specification or information it may give is accurate and correct, it cannot, because it has no direct or continuous control over where or how its products are applied, accept any liability either directly or indirectly arising from the use of its products, whether or not in accordance with any advice, specification, recommendation or information given by it.



*constructive solutions*