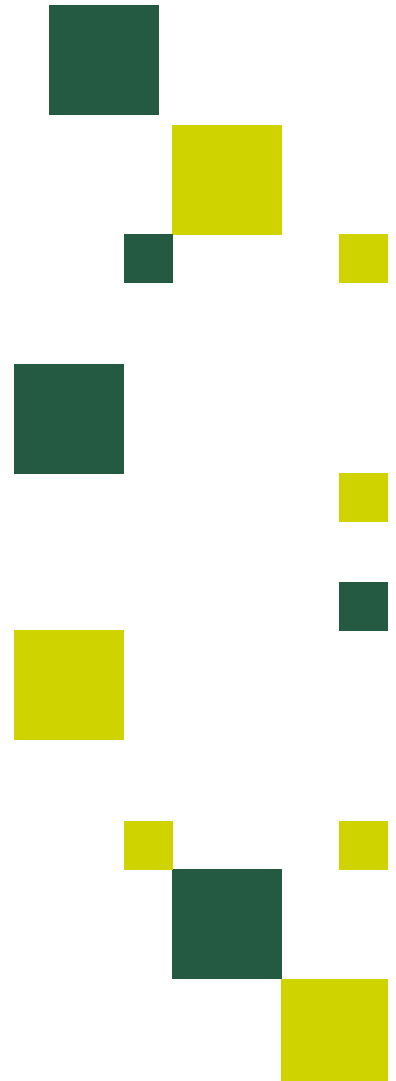


WATERSTOP

INSTRUCTION FOR USE

ISSUE 3
07 MAY 2021
DWI 56.4.1217.





WATERSTOP IFU

Contents Page

Contents	2
Supplier Details	2
1. Product Description and Scope of Use	3
2. Application	3
3. Waste Disposal	5
4. Safety	6

Supplier Details

Company Name: Natural Cement Distribution Ltd
Address: Fountain Parade
Mapplewell
Barnsley
South Yorkshire
S75 6FW
Telephone: 01226 381133
Fax: 01226 381177
Web: www.naturalcement.co.uk
Contact: Phil Richardson
e-mail: enquiries@naturalcement.co.uk

This Instructions For Use document is written specifically for Water Companies for use with drinking water only

1 Product Description and Scope of Use

WATERSTOP is a fast setting and fast curing natural cement based material. It is intended for use in sealing leaks and preventing ingress of water in potable water systems.

2 Application

a) Packaging

WATERSTOP is packaged in a polythene bag with re-sealable pull tie within a sealed plastic tub.

Tub Weight: 5kg

b) Storage

WATERSTOP should be stored in dry conditions and an unopened tub will last for at least twelve months. A part used tub will also last twelve months provided it is re-sealed.

c) Surface Preparation

- WATERSTOP must not be applied to frozen or overheated surfaces i.e. outside the temperature range 0°C to 30°C.
- Prepare the surface in advance to provide an adequate key. The surface of any glazed brickwork should be texturised with a bush hammer and the joints raked out.
- The surface to which the WATERSTOP will be applied must be clean, free from dust and loose particles and be thoroughly dampened.

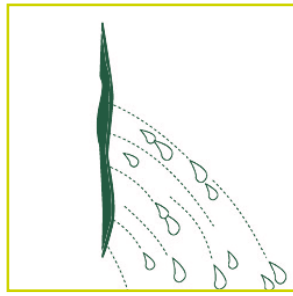
d) Mixing

- Add three parts of WATERSTOP to one part of clean fresh water and mix vigorously by hand, within one minute this will produce a putty consistency.
- Always place water in the mixing container first and then add the WATERSTOP. Waterproof gloves should be worn for this procedure

e) Using WATERSTOP

- Waterproof gloves should be worn for this procedure.
- Apply the mixed putty as quickly as possible and hold the putty firmly in position without movement until the WATERSTOP has set. Do not apply additional water to the surface during setting as this may cause surface cracking.
- Once setting has started, DO NOT attempt to re-mix or to smooth the surface because this will impair the mechanical properties and in particular, cause the strength and adhesion to be lost.
- WATERSTOP can be used to provide a temporary seal on potable water cast iron and plastic pipes provided the surface is roughened prior to the application.

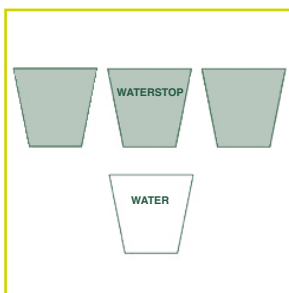
Sealing potable water leaks through masonry



Leak through crack in wall or flow



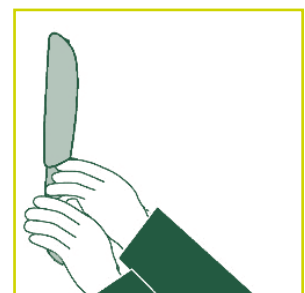
Open up crack to remove any loose material and to provide a key for the WATERSTOP



Add three parts of WATERSTOP to one part of clean fresh water and mix vigorously by hand, within one minute this will produce a putty consistency.

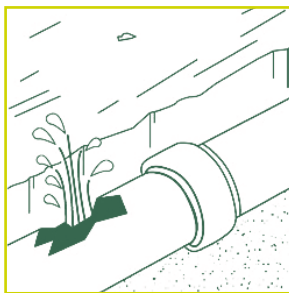


Apply the putty to the leak and hold firmly in position without movement until set

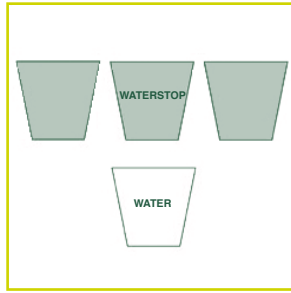


For large leaks, seal in small areas commencing at the top and working down the crack until the leak has been stopped

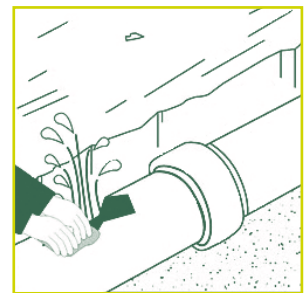
Sealing leaks or repairing damage in potable water pipes



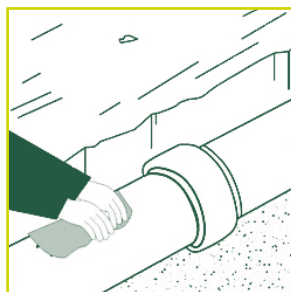
Clean around the hole in the pipe.



Add three parts of WATERSTOP to one part of clean fresh water and mix vigorously by hand, within one minute this will produce a putty consistency.



Apply the putty to the damaged area or leak and hold firmly in position without movement until set.



For large repairs and leaks seal in small areas commencing at one end and working across the damaged or leaking area until the leak has been stopped or the repair completed.



f) Setting times

WATERSTOP will start to set in 90 seconds and finish setting in 2½ minutes.

No precise strength values are available for this material and because of the very short setting time the inclusion of a setting curve is not practicable. However, the following information is included as an operational guide:

In winter WATERSTOP can be used down to 0°C. The set will be slow but it can be accelerated by using warm water.

In very hot conditions up to 30°C the set will be faster but can be slowed down by using fresh cold water.

As a rough guide only, if the mixing temperature is halved the set time will approximately double.

Full curing time is 30 minutes after the end of the setting period.

g) Disinfection

WATERSTOP material does not require any additional cleaning or disinfection above the standard procedures employed by companies or water utilities before being returned to service.

h) Cleaning

WATERSTOP should be removed from tools and equipment and clean with water immediately after use.

3 Waste Disposal

a) Empty bags

Empty inner polythene bags and outer plastic tubs can be returned to the user's stores for recycling.

Alternatively they can be disposed into a skip destined for landfill.

b) Waste material

Dispose of waste material in compliance with local by-laws, national legislation and/or EC regulations

i) Material after the addition of water – hardened

Dispose of the hardened product as concrete waste. It is a non-hazardous material and may be disposed in appropriate landfill sites.

Avoid introduction of this material into sewer systems, waste water disposal networks and water courses.

ii) Material – slurry

Leave to harden and dispose of as in **3 b) i** above.

iii) Material – unused residue or dry spillage

Pick up dry. Mix with water and allow to harden. Dispose of as in **3 b) i** above.



Part financed by the European Community European Regional Development Fund and managed by Yorkshire Enterprise

4 Safety

- a) Wear suitable protective clothing when handling bags and mixing the material.
- b) Wear safety glasses, work gloves and dust mask.
- c) Avoid spillage from damaged bags.
- d) Avoid breathing the powder.
- e) Avoid raising dust especially when sweeping. When mixing, always add the powder to the water to avoid raising dust.
- f) Avoid skin contact with the wet cement during the setting reaction.
- g) Discard immediately any clothing which becomes saturated with wet cement.

It is important to read the WATERSTOP Safety Data Sheet (SDS) for full details prior to using the material.

The SDS is available on request from Natural Cement Distribution Ltd. Contact details are shown on Page 2 of these Instructions.



Distributed by:



Fountain Parade, Mapplewell, Barnsley, South Yorkshire, S75 6FW
e. enquiries@naturalcement.co.uk t. 01226 381133 f. 01226 381177

www.naturalcement.co.uk