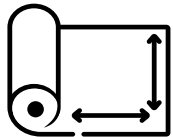


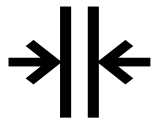
RHINOPLAST SUPER GAS BARRIER

High performance monolithic hybrid
co-polymer Radon, Amber 1 Gas Barrier
& Damp Proof Membrane

PrinciPal
BUILDING PRODUCTS



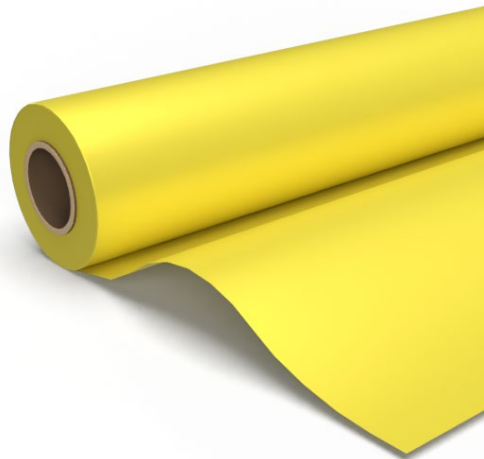
4m x 20m - Folded
2m x 40m - Unfolded



400mu



Yellow



Application

- To prevent the ingress of radon in both basic and full radon protection areas.
- Positioned loose lay within the ground floor construction
- Robust to install above and below structural floor
- Suitable for line out installations to cover the entire footprint of the building to reduce joints
- Suitable for low gas risk NHBC housing sites designated Amber 1 to prevent the ingress of harmful ground gases for low-rise residential housing applications when the membrane is used above a well-ventilated sub floor void



Supplied centre fold to achieve a lay flat surface, and also available unfolded



Robust membrane with a high resistance to damage and puncturing



NSAI approved



CE marked for water proofing to harmonised standard EN 13967:2012+A1:2017



Conforms to the technical guidance required of NHBC



Meets guidance set out within BRE BR211 (2023) - 6.2.1 Barriers



Excellent heat welding characteristics



Produced from virgin grade Hybrid Co-Polymers to meet warranty providers requirements



Preformed accessories available



Taped system for easy cold applied installation

Web: www.pbpltd.co.uk | Tel: 01709728150

Principal Building Products Ltd, Barbot Hall Ind Est. Mangham Road, Rotherham. S614RJ

Technical Background

Radon is a radioactive gas, it is a colourless, odourless naturally occurring and we can't see, smell, or taste it. This gas is prevalent in granite areas as granite is naturally rich in Uranium, but can occur almost anywhere and all new sites should be checked against the Radon potential map for Great Britain to understand the measures required. It is widely held that exposure to high levels of radon can cause lung cancer, Radon produces tiny radioactive particles in the air we breathe. The Radon level in the air outside is very low but can be higher within confined spaces inside buildings.

Radon specific membranes are designed to protect structures and inhabitants from the effects of these gasses by forming a barrier and will also act as damp proof membranes for waterproofing and will last the lifetime of the building.

With the increase in awareness of such gasses, along with more and more stringent requirements, it is becoming increasingly important for contractors to use "fit for purpose materials" in the secure knowledge that they will perform satisfactorily.

The basic radon protection to the structure is by way of a complete "footprint" membrane system that when combined with underfloor passive venting (either a radon sump or a ventilated subfloor void) that can be activated with the addition of a fan to offer full radon protection if required. The key to a successful outcome is good installation and attention to the details, even the best membranes poorly installed are likely to fail.

Technical Data

Material Properties			Test Method	Value	
Thickness	Membrane		EN 1849-2	0.4mm / 400µm	
Material			Hybrid co-polymer Polyethylene	PE	
Colours		Membrane		Yellow	
Width			EN 1848-2	4m	2m
Length			EN 1848-2	20m	40m
Area/roll			4m x 20m	80m ²	
Mass (combined)				385g.m ²	
roll weight				31kg	
Reaction to fire			EN 13501-1	E	
Water tightness @ 60kPa & 400kPa			EN 1928	Watertight	
Resistance to impact			EN 12691 – Method A : 350mm drop	Pass	
			EN 12691 – Method B : 350mm drop	Pass	
Resistance to static loading			EN 12730	20kg (Pass)	
Durability against thermal ageing			EN1928	Pass	
Durability against chemicals			EN 1847/DIN EN 1928	Pass	
Tensile strength	MD	CMD	EN 12311-2	20.2 N/mm ²	20.9 N/mm ²
Elongation	MD	CMD	EN12311-2	>653%	>671%
Tear resistance -nail shank	MD	CMD	EN 12310-1	166N	161 N
Shear resistance of tapped joint seam – 50mm double sided/75mm Reinforced single sided			EN 12317-2	181 N/50mm	
Water vapour permeability			EN 1931 – Method B	0.16g/m ² /day	
CO ² Transmission			ASTM F2476	636 ml/m ² /day.atm	
Methane Transmission			ASTM D1434	154 ml/m ² /day.atm	
Radon permeability			SP Method 3873	4.2·10 ⁻¹² m ² /s	

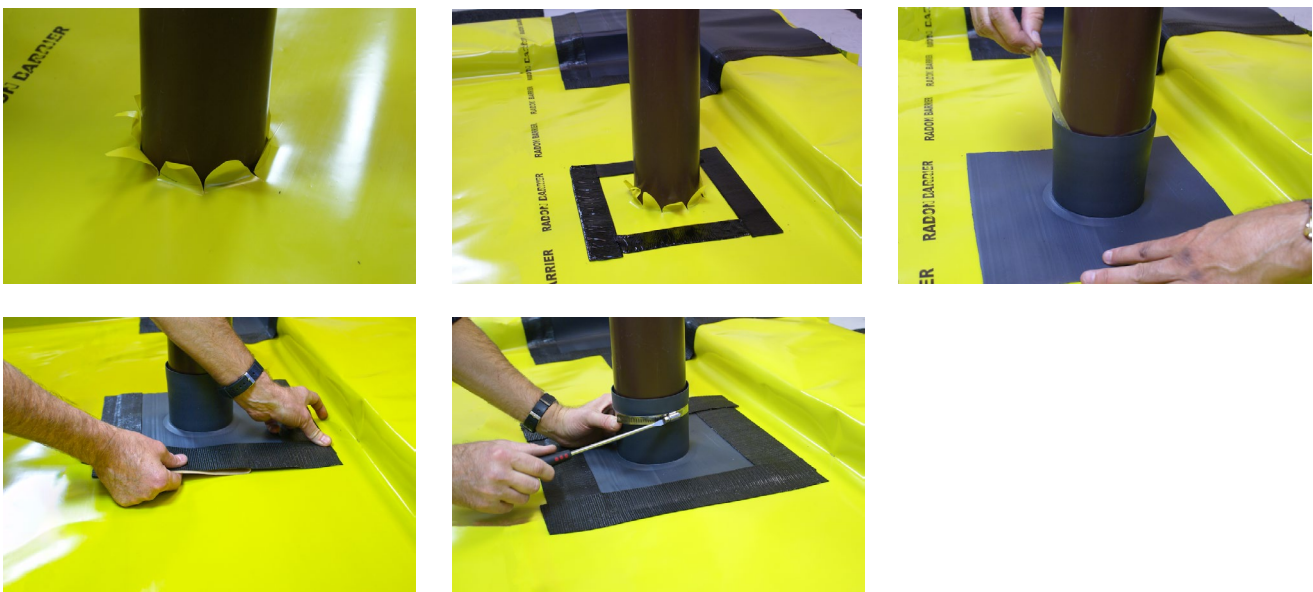
Installation Guide

- Prior to installation the application surface needs to be cleaned from sharp and protruding objects to reduce risk of damage, for some applications soft sand blinding or fleece may be required for bedding membrane
- The product to be rolled flat with no folds or creases over the main surface area.
- All lap joints to be completed as works proceed lapping at least 150mm.
- For taping apply continuous run of double-sided tape between membrane layers within the overlap area and then compress with roller to expel air bubbles for uniformed seal
- Girth tape should be applied to sealed laps to overseal and reduce exposure to open edge and remove risk of separation during concrete pour
- If welding is preferred, ensure this is completed by suitably skilled and/or qualified tradesperson
- Junctions and service penetrations can be formed with accessories, including corners, top hats, and pipe collars, and sealed with tapes or welded.

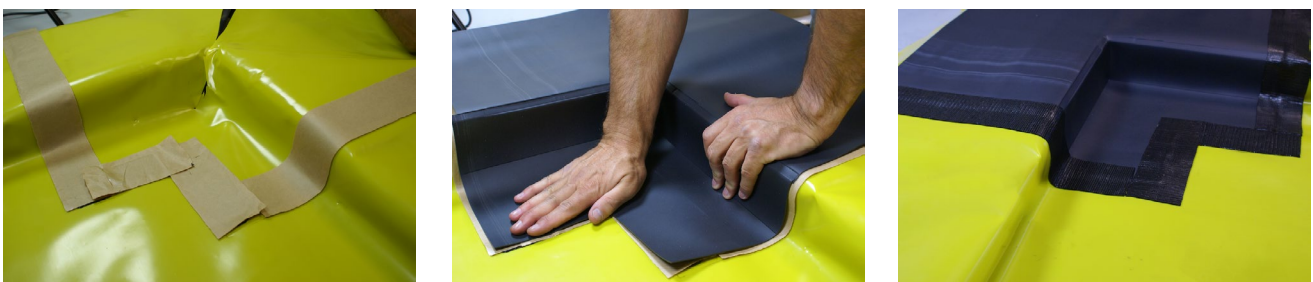
Jointing and Detailing - In Line Joints



Jointing and Detailing - Service Pipe Penetrations



Jointing and Detailing - Internal Corners



Product Range & Accessories

- Our Technical Department is available to advise on individual projects and to prepare or assist in the preparation of schedules and issue drawings.

Description	Roll width	Length		Thickness	M ² /roll
Rhinoplast Super Gas Barrier	4m	20m	C/F	0.4mm	80m ²
Rhinoplast Super Gas Barrier (Optional)	2m	40m	Unfolded	0.4mm	80m ²
Rhinoplast Single Sided Gas Resistant Detail Strip	75mm	20m			
LT Jointstrip Double Sided Tape	50mm	15m			
Rhinoplast High Tack Girth Tape	75mm	50mm			
Gas Resistant Detailing Wrap/Tape	300mm	20m			
Radon Sump	420mm x 420mm x 230mm				
Telescopic Vent Top Hat	425mm x 300mm				
Top Hat Pipe Collar - Flexi or Rigid – Other sizes made to order	Ø50mm	Ø110mm	Ø135mm	Ø160mm	
Overall Cavity Wall Options – 300mm/325mm/350mm	Size variation – Rise (Other sizes made to order)				
Gas Barrier Internal 90° Corner	75mm	150mm	225mm		
Gas Barrier External 90° Corner	75mm	150mm	225mm		
Gas Barrier Step Door Cloak Pair	75mm	150mm	225mm		
100mm Load Bearing Wall	Size variation – Rise (Other sizes made to order)				
Gas Barrier Load Bearing Wall Corner	75mm	150mm	225mm		
Gas Barrier Load Bearing Wall T Junction Single Skin	75mm	150mm	225mm		
Gas Barrier Load Bearing Wall T Junction Double Skin	75mm	150mm	225mm		
Gas Barrier Load Bearing Wall End Cap	75mm	150mm	225mm		
Separating/Compartment Wall					
Separating Wall T Junction Double Skin	Made to order				
Perimeter T/Frame Trays – various cavity options	Size variation – Rise (Other sizes made to order)				
Preformed Perimeter T/Frame Linear trays – 2mtr	75mm	150mm	225mm		
Gas Barrier T/Frame Internal 90° Corner	75mm	150mm	225mm		
Gas Barrier T/Frame External 90° Corner	75mm	150mm	225mm		
Telescopic Vent T/Frame Top hat	75mm	150mm	225mm		

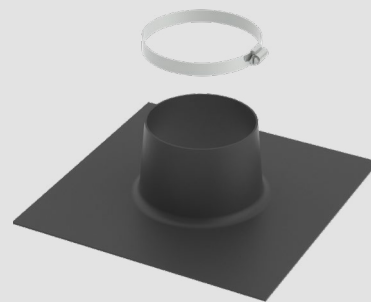
Top Hat Pipe Collar

Top Hats are used around service pipe penetrations to provide an effective gas tight seal. The base of the pre-formed unit should be sealed using Rhinoplast LT Jointstrip and overtaped at the edges with Girth Tape. A stainless steel Jubilee clip is available for the collar. Airtight seals should be formed around all service entry points.

Available Sizes

50mm, 110mm, 135mm, 160mm

Available in rigid and flexible types.



Radon Sump

The Radon Sump is manufactured by a rotational moulding process from heavy duty polythene. The Sump is constructed with a solid roof and base and is provided with 40mm diameter holes in the walls.

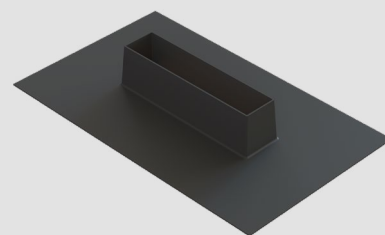
Spigots for 100mm pipe connections are provided at each end of the sump but are blanked off with knock outs to allow choice of direction for extract pipe.



Telescopic Vent Top Hat

Designed to ease installation around complex underfloor ventilators in masonry construction by reducing the amount of detailing and taping required, preformed to simply cap over ventilators, manufactured from gas resistant DPC, standard cloaks available from stock.

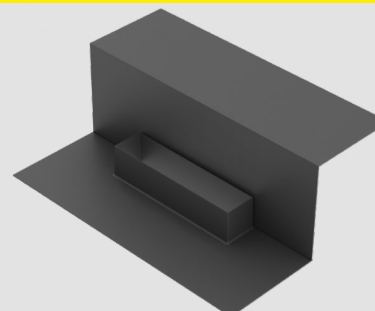
Bespoke options available and designed from our in-house design team.



Telescopic Vent T/Frame Top Hat

Designed to ease installation around complex underfloor ventilators in timber frame construction by reducing the amount of detailing and taping required, preformed to simply cap over ventilators, manufactured from gas resistant DPC, standard cloaks available from stock.

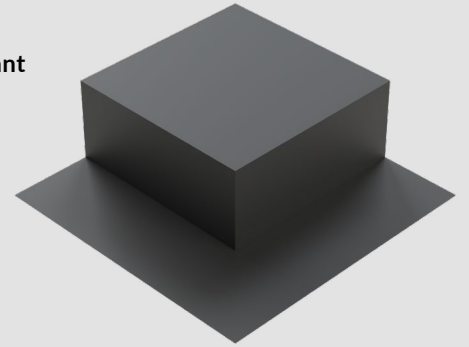
Bespoke options available and designed from our in-house design team.



Gas Barrier External 90° Corner

Designed to ease installation by reducing the amount of detailing and taping required, preformed to simply cap off cavity wall external corners, manufactured from gas resistant DPC, standard cloaks available from stock.

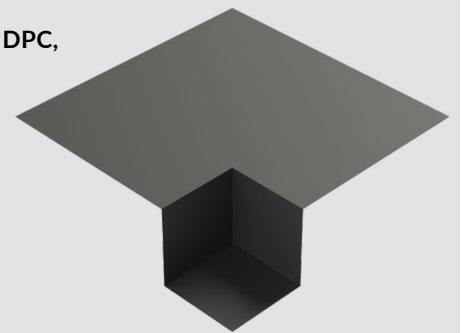
Bespoke options available and designed from our in-house design team.



Gas Barrier Internal 90° Corner

Designed to ease installation by reducing the amount of detailing and taping required, preformed to simply cap off cavity wall internal corners, manufactured from gas resistant DPC, standard cloaks available from stock.

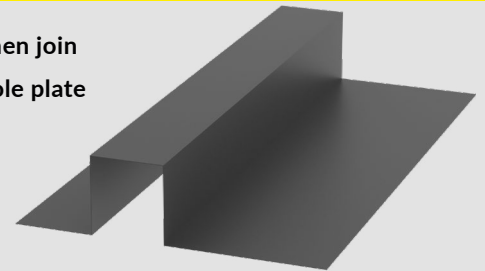
Bespoke options available and designed from our in-house design team.



Preformed Perimeter T/Frame Linear trays - 2mtr

Preformed from rigid material to allow perimeter protection for early installation to then join gas barrier membrane at a later stage, designed to cap over foundation block below sole plate to allow ventilated airspace. Manufactured from rigid HDPE.

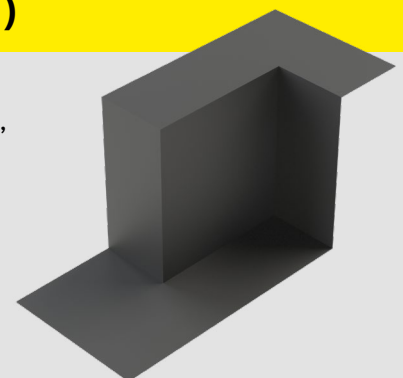
Bespoke options available and designed from our in-house design team.



Gas Barrier Step Door Cloak Pair (LH illustrated)

Designed to ease the installation and preformed to cap off cavity wall at reveal openings, manufactured from gas resistant DPC, standard cloaks available from stock.

Bespoke options available and designed from our in-house design team.

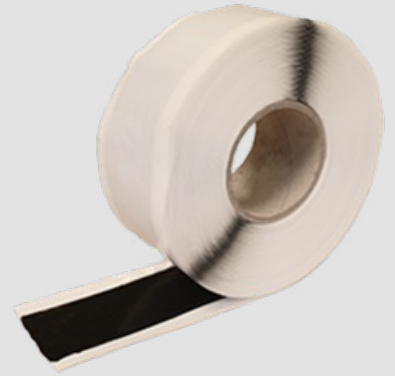


LT Joinstrip double sided tape - for sealing lapped joints

A butyl modified double sided bitumen tape, 1.5mm thick. Designed to form a gas tight gasket. Excellent adhesion and tolerance to damp and cold conditions.

Colour: Black

Available in 50mm x 15m rolls, and 100mm x 15m rolls.



Rhinoplast Reinforced Single Sided Detail Strip

A butyl modified reinforced single sided bitumen tape, designed to reinforce details such as difficult folds and pre-formed cloaks. Acts as a secondary gas seal. Excellent adhesion and dimensionally stable.

Colour: Black

Available in 75mm x 15m rolls.



Rhinoplast high tack girth tape

A single sided girth tape used to secure and protect, linear joints. Excellent adhesion, dimensionally stable and water resistant.

Colour: Black

Available in 72mm x 50m rolls



Gas Resistant Detailing Wrap

A tape constructed from an aluminium/polythene laminate coated on one surface and a bitumen-polymer adhesive compound. Uses include gas proofing of landfill sites, radon affected areas and redeveloped contaminated sites, water proofing foundation, basement roofs and plaza decks, lift shafts, pits, carpark decks and subways.

Roll size: 300mm x 20m

